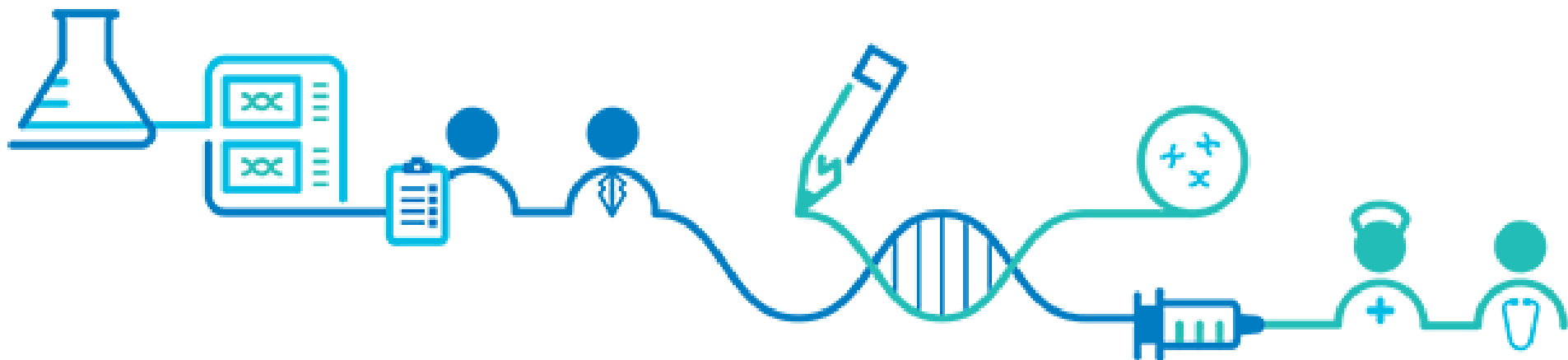


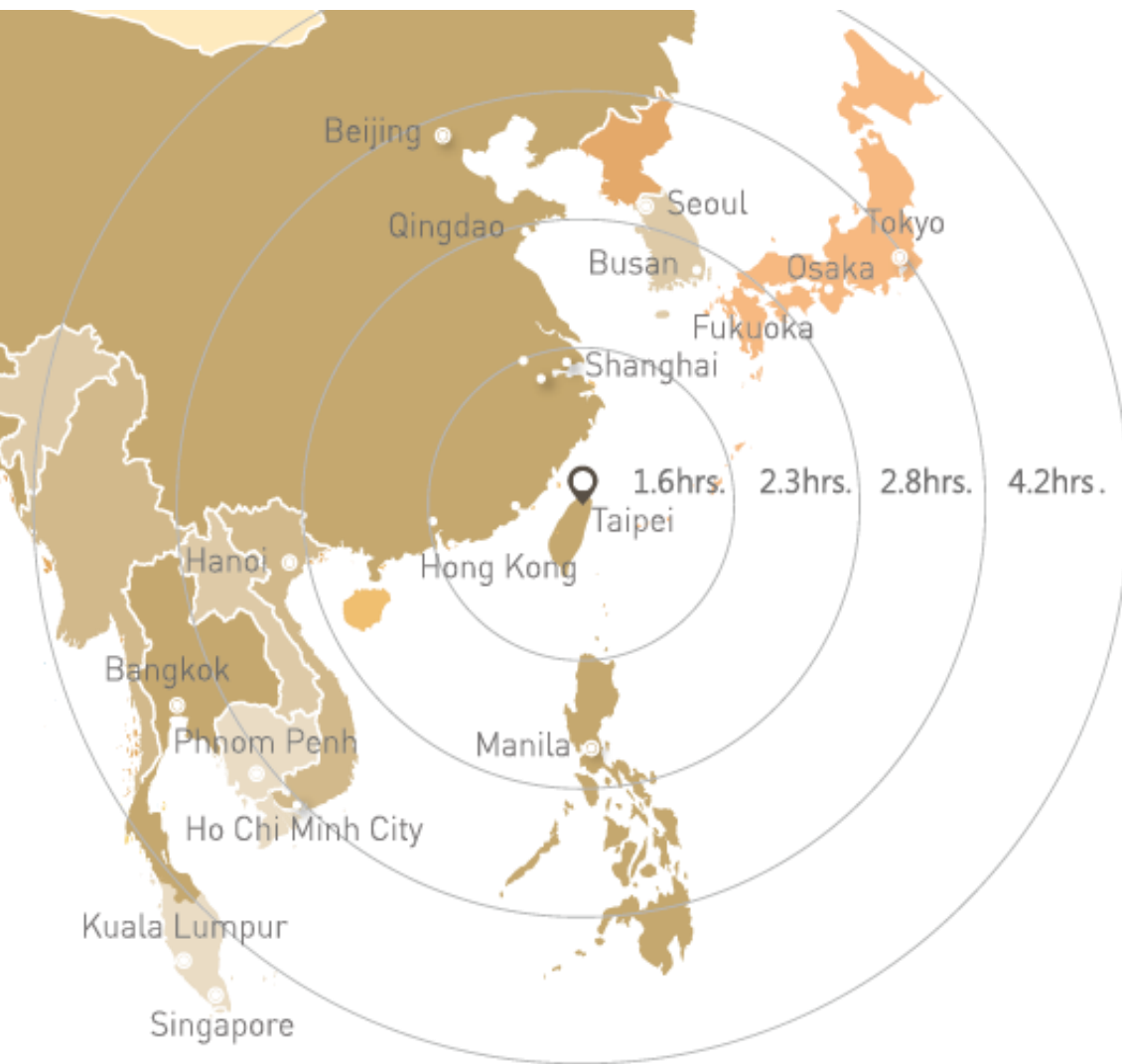


BIO International
Convention

The Global Event for Biotechnology

Investment Guide





Taipei Highlights

Land Area	271.8 km ²
-----------	-----------------------

Population	2,668,572
------------	-----------

Working Population	1,846,280
--------------------	-----------

Number of Businesses	237,523
----------------------	---------

Annual Total Revenue	US\$427.8 billion
----------------------	-------------------

Fiber Coverage Rate	100%
---------------------	------

Foreign Direct Investment in Taipei

Over 3,600 foreign firms set up in Taipei, including world-class enterprises

The 1st Choice for
Foreign R&D centers
and HQs in Taiwan

63%
of FDI in Taiwan

72%
of Foreign Companies in
Taiwan

Geography 71%

Living 63%

Talent 48%

Tax 30%

Proximity
to China 24%

R&D 22%

Reasons Foreign
Entrepreneurs Choose
Taipei

Source: 2016 MOEAIC & TCOOC, 2016 Foreign Entrepreneurs Survey By Enspyre.

Status and Industrial Strategy of Taiwan's Biotech Industry

Policy Vision

Establishing Taiwan as a Major Hub in the Asia Pacific Biotech and Pharmaceutical Industries

Development Strategy and Action Plan

Connect the local, global, and future

1. Improve the ecosystem

Six constructs: regulations, intellectual property, talent, funds, resources, and projects.

2. Integrate an innovative cluster

New drug R&D cluster in Nangang; Hsinchu biotech and pharmaceutical cluster; central and southern biotech clusters

3. Connect international market resources

Entering the global market, creating sustainable development, and driving domestic technical talent and industrial competitiveness.

4. Promote specific key industries

Develop niche precision medicine, international featured medicine, and welfare industries

Taiwan

Annual Revenue

US\$10.5B

Number of Companies

2,004

Number of Employees

80,732

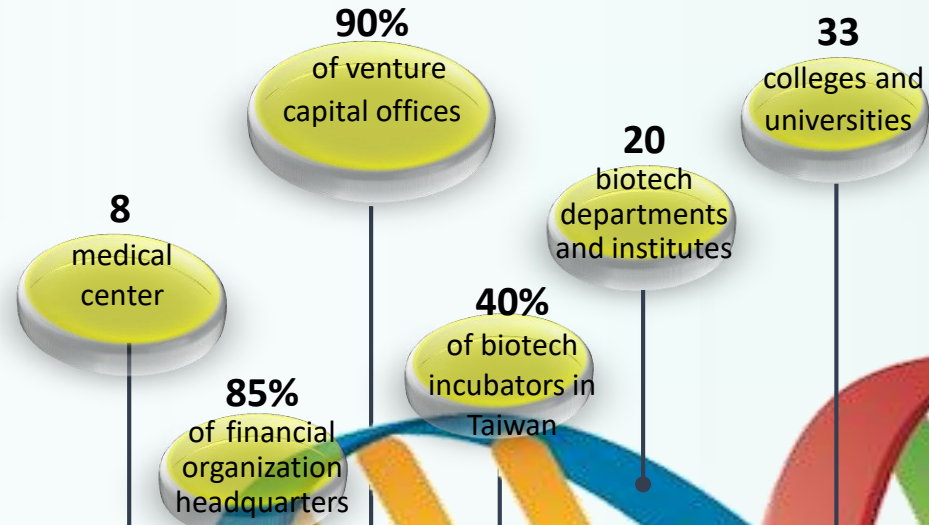
Data as of end of 2017

Taipei's Biotechnology Industry Environment and Advantages

Taipei is a major location in Taiwan's biotechnology industry

	Taipei City	Taiwan
Taipei City Revenue	60% US\$6.54B	vs. US\$10.5B
Number of companies	24% 482	vs. 2,004
Number of Employees	33% 26,688	vs. 80,732

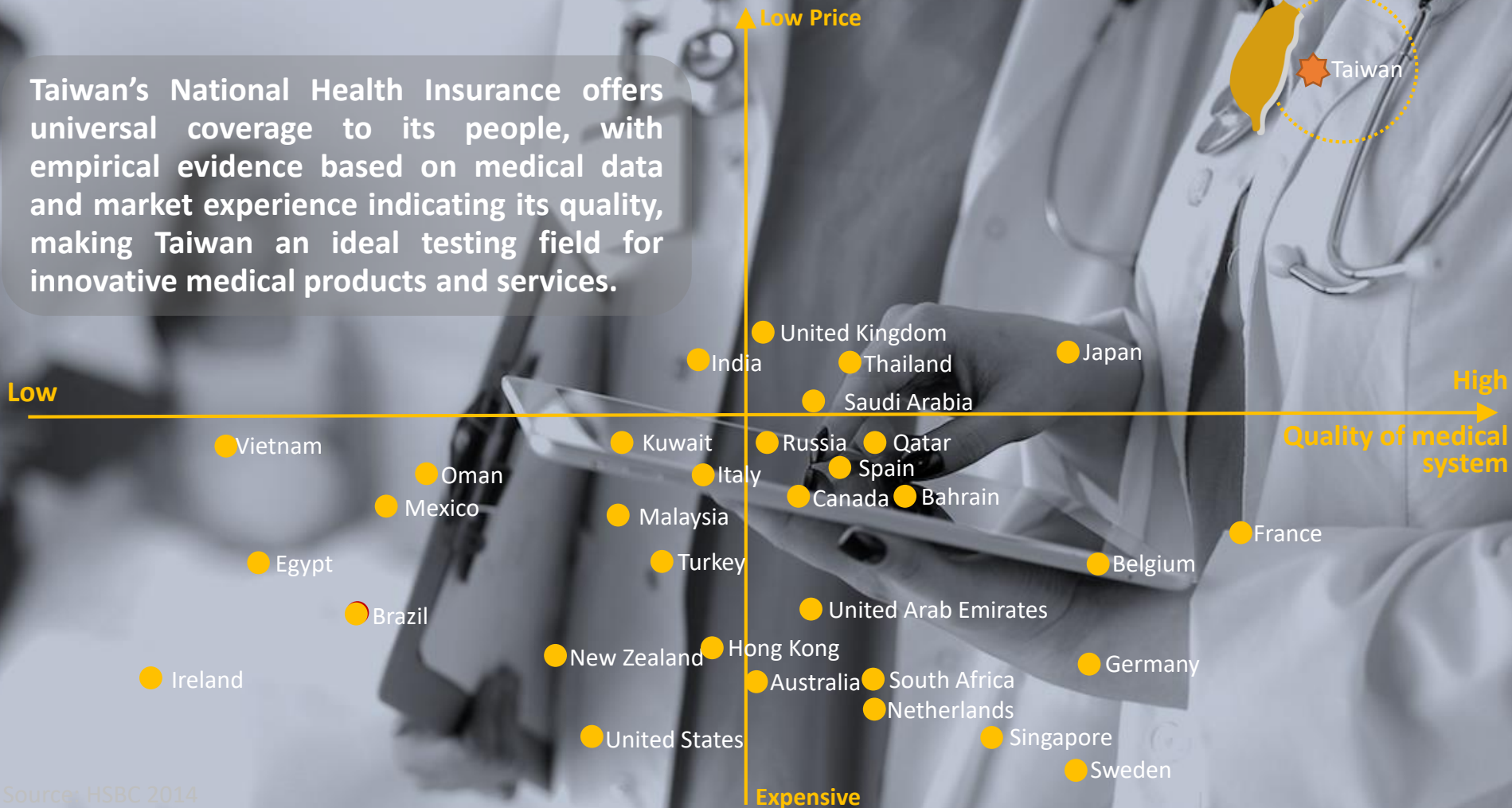
As of the end of 2017 Source:
2018 Biotechnology Industry White Paper
2018 Survey Project for Taipei Science and Technology Industrial Park and Biotechnology Industry



Taipei has a complete industrial infrastructure, from venture capital, R&D, incubators, and talent cultivation institutions, through to industrial supply networks and clinical markets.

HSBC Survey: Taiwan provides the best health insurance system in the world

Taiwan's National Health Insurance offers universal coverage to its people, with empirical evidence based on medical data and market experience indicating its quality, making Taiwan an ideal testing field for innovative medical products and services.



Source: HSBC 2014

Future Industrial Space 4+1 Industrial Park Project

Shezidao Eco-project

Launch Date: 2025

Beitou Shilin Science Park

Launch Date: 2019

Neihu Technology Park Version 2.0

Launch Date: 2016

Innovation Park of Yuanshan Expo venue

Launch Date: 2017

Nangang Biotechnology Cluster

Launch Date: 2016

Industries of the
Future Reserved
for Department

Smart Health Care
Industry Digital
Technology Service
Industry

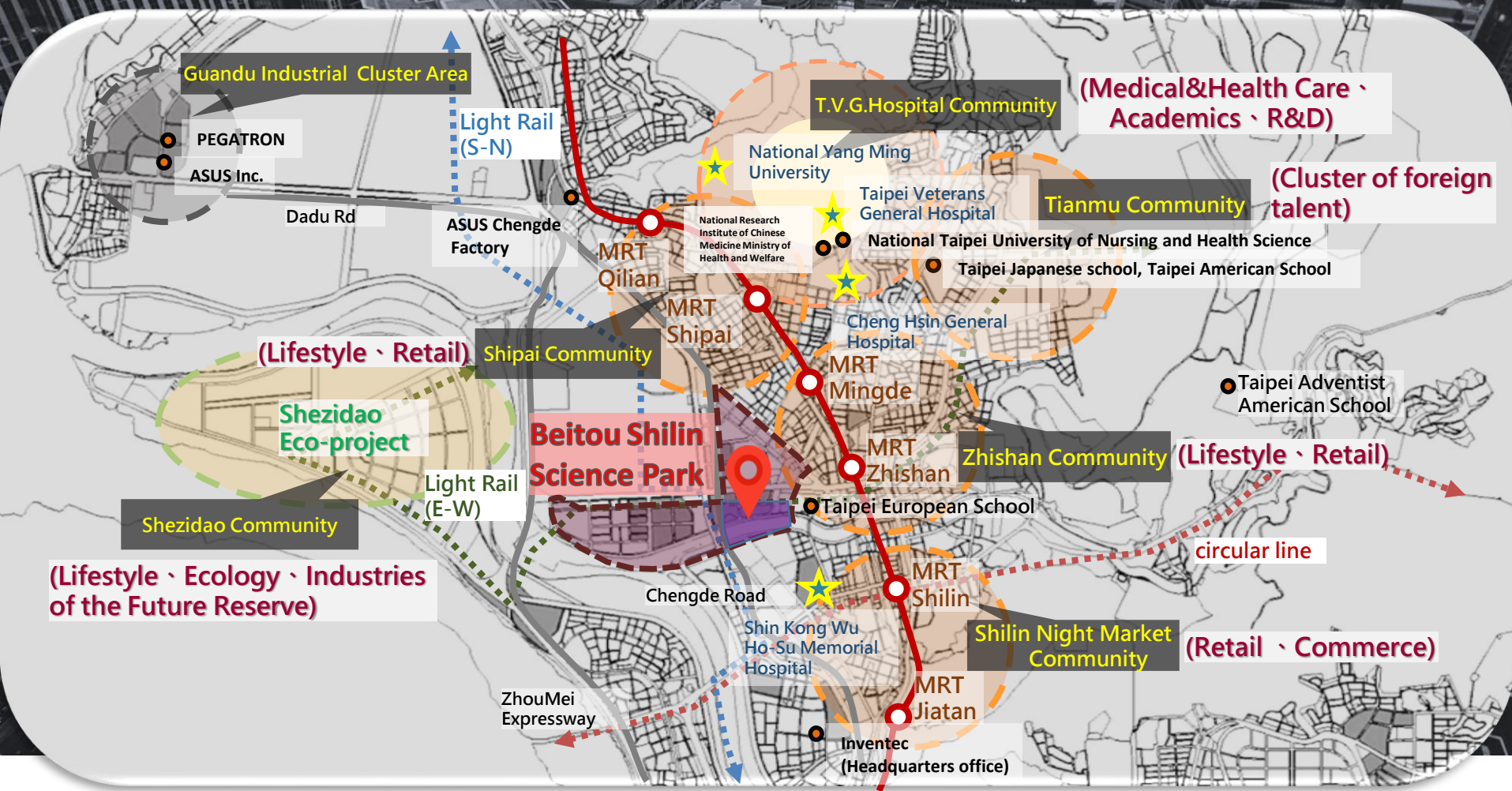
ICT Industry
Biotechnology
Industry Startups

Biotechnology/POP
Music Startups/Software
Exhibition Industry

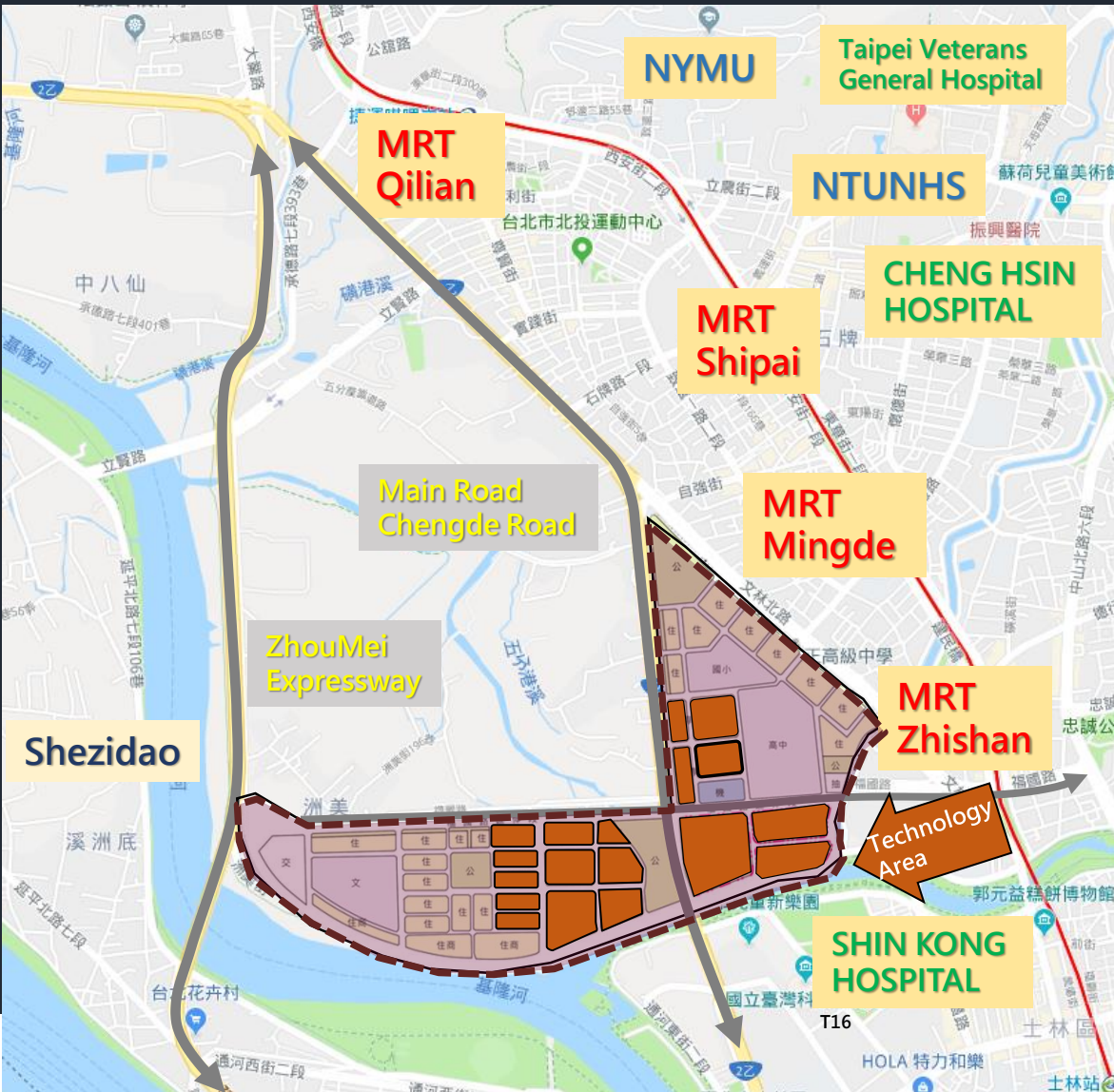
- Promote a next-generation industrial park
- Connect industrial clusters
- Redefine urban industrial land use

Surroundings of Beitou Shilin Science Park

Located in an area with convenient life function and a wide variety of health care resources, such as university hospitals, medical & nursing schools; plus being one of the most important clusters of big tech companies, Beitou Shilin Science Park takes the advantage to not only facilitate the development of relevant industries, including biotech, health care, smart-tech and other supporting technologies, but attract global talent to work here as well.



Beitou Shilin Technology Park: Next Technology Area in Taipei



- Total area of the park: 1,942,900 m²
- Technological industry area: 250,000 m²
- Connects the Taipei technological corridor
- Convenient transportation in all directions
- Medical talent
- Art and culture

Investment Plan:

Smart medical care, health care, emerging technology

2019

Start attracting/promoting investment

Complete value chain Taipei biotechnology industry

Basic research

Preclinical
development

Clinical trial
review(IND)

Clinical trial
prototyping

New drug
registration
(NDA)

Market

Academia Sinica



National Biotechnology
Research Park



Food and Drug
Administration (FDA)



**Nangang
Biotechnology
Industry Cluster
project**

R&D labs, pilot plants, medical
device and operational base



Food and Drug
Administration (FDA)



Mercedes-Benz dealer
中華賓士南港展示中心

Theater Nangang
喜樂時代影城 南港店

**Nangang Biotechnology
Industry Cluster project**

**National Biotechnology
Research Park**

**Food and Drug
Administration
(FDA)**

Liancheng
Park
聯成公園

Kunyang
昆陽站

Ministry of Health
and Welfare
衛生福利部

MRT Nangang
捷運南港站

Nangang Park
南港公園

Academia
Sinica

Jiuzhuang
Park
舊莊公園

Hospital
Branch
立聯合
孝院區

Park
園

橫科

Guoxing Street

Section 1, Minquan St

南港關家祖厝
「德成居」

坑仔內

TAIPEI
NEW TAIPEI

109

New Base: Nangang Biotech Cluster

3 minutes

walk to MRT Nangang Station
and High Speed Rail Station

1,114,900 ft²

of total area

177,900 ft²

of incubators

427,000 ft²

of industrial space

e.g., labs, offices, pilot
plants

2023
Open



Invest . Taipei



invest.taipei



invest.taipei



invest.taipei



886-2-2757-4518
886-2-2757-4519



invest.taipei@mail.taipei.gov.tw



Invest Taipei Office (ITO)

2F., North Wing, Mo. 1, Shifu Rd., Xinyi Dist. Taipei City, Taiwan (R.O.C.)

ito
invest taipei

The information of exhibitors

Company Name : APrevent Medical Inc.

Website : <http://www.apreventmed.com/>



Address : ZhongShan District, Lequn 2nd Rd, No.
187, 7th Floor, Taipei, 10487, TAIWAN
R.O.C



Contact Person : Elvy Fan

Major Fields : Medical device and software research and development, manufacture and distribution.
Taiwan FDA medical device in-country representative, registration and distribution.

APrevent Medical Inc. has offices in Taiwan (AspirEx Medical Ltd.) and Austria (APrevent Biotech GmbH). APrevent Biotech GmbH is ISO 13485 certified for design, manufacturing, and distribution of medical devices.

APrevent is dedicated to providing minimally invasive and innovative ENT implant and Software-as-a-Service (SaaS) technologies for voice & speech disorders, which are patient-orientated, physician friendly and improve the quality of lives around the world.

APrevent has diverse team of clinically experienced physicians, bio-mechanical and software engineers, and researchers with deep industry expertise committed to creating vocal identities.

Vocal Implant System (VOIS)

An innovative adjustable implant to treat glottic insufficiency and prevent aspiration pneumonia. VOIS is now the smallest adjustable patient-specific implant to treat glottic insufficiency, VOIS can fine tuning to achieve optimal outcomes and restore voice-specific spectrum profile. The total addressable market is \$ 4.1B USD.

Aprevent® Intelligent Speak (AiSpeak)

AiSpeak is an artificial intelligible dysarthric speech conversion platform, it helps people who suffer from dysarthria including stroke, cerebral palsy, Parkinson's disease and brain tumor patients to communicate and operate devices by voice. The potential market is \$ 9B USD.

Taiwan FDA Product Registration and Marketing Strategy Service

APrevent provides medical device in-country representative and registration service and medical device market channel planning to accelerate imported product launching to market.

The information of exhibitors

Company Name : LITE-MED INC.

Website : www.lite-med.com



Address : 9F., No.49, Dongxing Rd., Xinyi District,
Taipei City 11070, Taiwan

LITEMED

Contact Person : David Hsu

Major Fields : Project Management 、 Technical / Marketing Cooperation and Marketing Arrangement

Lite-Med Inc. carried out Taiwan government's push in manufacturing and development of medical equipment locally for advancement of the medical equipment industry in Taiwan. With successful integration of electronic, mechanical and automation techniques, Lite-Med successfully developed a high-tech medical device for the treatment of patients with kidney stones. Lite-Med's dual-module localization Extracorporeal Shock Wave Lithotripter (ESWL), consists of a high efficiency, painless, no anesthesia needed shockwave generator, a dual-module auto stone localization system, and a ultrasound stone tracking & locking system. It can not only reduce the side effects such as hematuria, hematoma, reduced renal function and less radiation damage but also increase the stone-hitting efficiency & patient safety, and improve the stone treatment quality. Basing on the same shockwave technology, Lite-Med also developed an Extracorporeal Shock Wave Therapy (ESWT) unit. It can effectively treat frozen shoulder, tennis elbow, plantar fasciitis. In the near future, the application of shockwave technology can be expanded into treatment of other diseases.

The information of exhibitors

Company Name : OBI Pharma, Inc.

Website : <http://www.obipharma.com/>



Address : 7th Floor, No. 369, Zhongxiao E Rd,
Nangang District, Taipei City, 115,
Taiwan

Contact Person : Celeste Chuang



Major Fields : New Drug Development, Novel Cancer Treatments, Immuno-oncology

OBI Pharma, Inc., is a Taiwan biopharmaceutical company that was established in 2002. It is publicly-listed on the Taipei Exchange (TPex ticker: 4174). OBI's mission is to develop and license novel therapeutic agents for unmet medical needs against cancer targets such as Globo Series (including Globo H, SSEA3, SSEA4), AKR1C3, and other promising targets. Globo Series and AKR1C3 are highly expressed in cancers of unmet need including Breast, Ovarian, Gastric, Lung, Liver Prostate and Esophageal.

The company's novel first-in-class immuno-oncology portfolio against Globo Series includes: Adagloxad Simolenin (formerly OBI-822; Globo H cancer vaccine), OBI-888 (Globo H mAb), OBI-999 (Globo H ADC), OBI-898 (SSEA4 mAb) and OBI-866 (SSEA4 cancer vaccine). Adagloxad Simolenin is a novel active Immuno-Oncology (IO) therapeutic vaccine for the treatment of epithelial-derived cancers, such as breast, ovarian, lung, prostate, colon, gastric, and pancreatic cancer. OBI has completed a Phase II multinational randomized control trial for Metastatic Breast Cancer, and commenced a Global P3 TNBC (Triple-negative Breast Cancer) trial in 2H, 2018. OBI-888 is a novel first-in-class monoclonal antibody selectively targeting Globo H. OBI has obtained U.S. FDA clearance for a Phase 1 Study of OBI-888 in January 2018, and commenced enrollment of patients with locally advanced or metastatic solid tumors of all types. OBI has completed preliminary pharmacological studies for OBI-999, OBI-898 and OBI-866. Preclinical preparation for human clinical trials are underway.

The company's novel first-in-class AKR1C3 therapy is OBI-3424 (small-molecule prodrug) that selectively releases a potent DNA alkylating agent in the presence of the aldo-keto reductase 1C3 (AKR1C3) enzyme. OBI has obtained U.S. FDA clearance for a Phase 1 Study of OBI-3424 in April 2018, and has commenced enrollment in patients with local solid tumors, including hepatocellular carcinoma (HCC) and castrate-resistant prostate cancer (CRPC).

The information of exhibitors

Company Name : Soteria Biotechnology Co., Ltd.

Website : <http://www.soteriabio.com/>



Address : 12F, No. 365, Fude 3rd Rd., Xizhi Dist.,
New Taipei City

Name: Clovis M. Sinisterra S.

Contact Person : **Position:** Business Development Manager
E-mail: clos.xin@soteriabio.com



Major Fields : AI, Fluid Dynamics, Medical Imaging, Big Data, Cloud Computing

Soteria Biotech is a medical software developer founded in May 2016, experienced in medical image analysis, 3D reconstruction, computational fluid dynamics, cloud computing, big data analytics and AI. We combine aforementioned disciplines into an assistive software for use in the diagnosis and treatment of obstructive sleep apnea (OSA). Soteria has been granted Taiwan and US patents for the method used with its software. Domestically, winner of 2017 ICT Month Innovative Elite and StartUP@Taipei demo day pitch contest 2017. In an international level it has been awarded the 2017 APICTA Award in the category of health & wellbeing.

The information of exhibitors

Company Name : TaiHao Medical Inc.

Website : www.taihaomed.com



Address : 3F.-8, No.100, Sec. 2, Heping E. Rd., Da'an
Dist., Taipei City 106, Taiwan (R.O.C.)



Contact Person : Octavia Lin

Major Fields : Advanced Visualization, Machine Learning/Computer-Aided Diagnosis Systems, Software/IT Services, Radiology, Breast Ultrasound

TaiHao Medical Inc. is an artificial intelligence company founded in 2013, Taipei, Taiwan. We focus on computer-aided detection and diagnosis, and our team consists of experts in artificial intelligence, biomedical engineering and medicine. The image processing methodology with artificial intelligence is evaluated to be helpful in assisting physicians in breast cancer detection and diagnosis. The available products include "BR-Viewer" and "BR-FHUS Smart System" focusing on breast screening to meet the upcoming requirements. Either for automated breast ultrasound (ABUS) or hand-held ultrasound images, the corresponding computer-aided system is ready. We aim at being the leader of medical software with whole body health care in the world.

Product information:

1. BR-Viewer – Support ABUS images from GE and SIEMENS, and support computer-aided detection*.
2. BR-FHUS Smart System – Assist radiologists in scanning process with scanning route map, quality assurance and real-time suspicious alerts*, and assist physicians in reporting with suspicious finding list*, customized reporting template and electronic diagnostic report.

Our products are certified and validated for clinical use in medicine (FDA, TFDA). TaiHao Medical Inc. has obtained ISO 13485:2016/NS-EN ISO13485:2016 certification and Good Manufacturing Practice (GMP) certification.

* Computer-aided detection has not yet received US FDA approval, but it does have TFDA approval.

The information of exhibitors

Company Name : TTY Biopharm Company Limited

Website : <http://eng.tty.com.tw/>



Address : 3F., No.3-1, Park St., Nangang Dist., Taipei City
11503, Taiwan R.O.C.



Contact Person : Vincent Huang (Vincent_huang@tty.com.tw)

Major Fields : Long-acting formulation products development, Oncology, Critical Care products and Primary and Specialty care products sales and marketing, CMO/CDMO

TTY Biopharm is a Taiwan based pharmaceutical company advanced in long-acting special formulation drugs development focus on Liposomal formulation and Microsphere platform and international marketing. Not only formulation technology, TTY Biopharm also developed Oncology and anti-critical Infection portfolio in Taiwan and major South-East Asian countries. To support commercial, TTY Biopharm has two major manufacture sites. One of them is a dedicated cytotoxic plant and certified to meet US FDA, EMA and PMDA inspection standard for producing Oncology products. Another one is a dedicated non-cytotoxic plant and certified to meet PMDA inspection standard for non-cytotoxic products.



Thank You

